



Woodridge  
at the park

# ELEVATIONS

SAN FELIPE 1945

 **WestWind Homes.com**  
Built for your life.



STUCCO

STUCCO

BRICK





Woodridge  
at the park

# FLOOR PLANS

## SAN FELIPE

3 bedrooms (4th optional)

2 1/2 baths

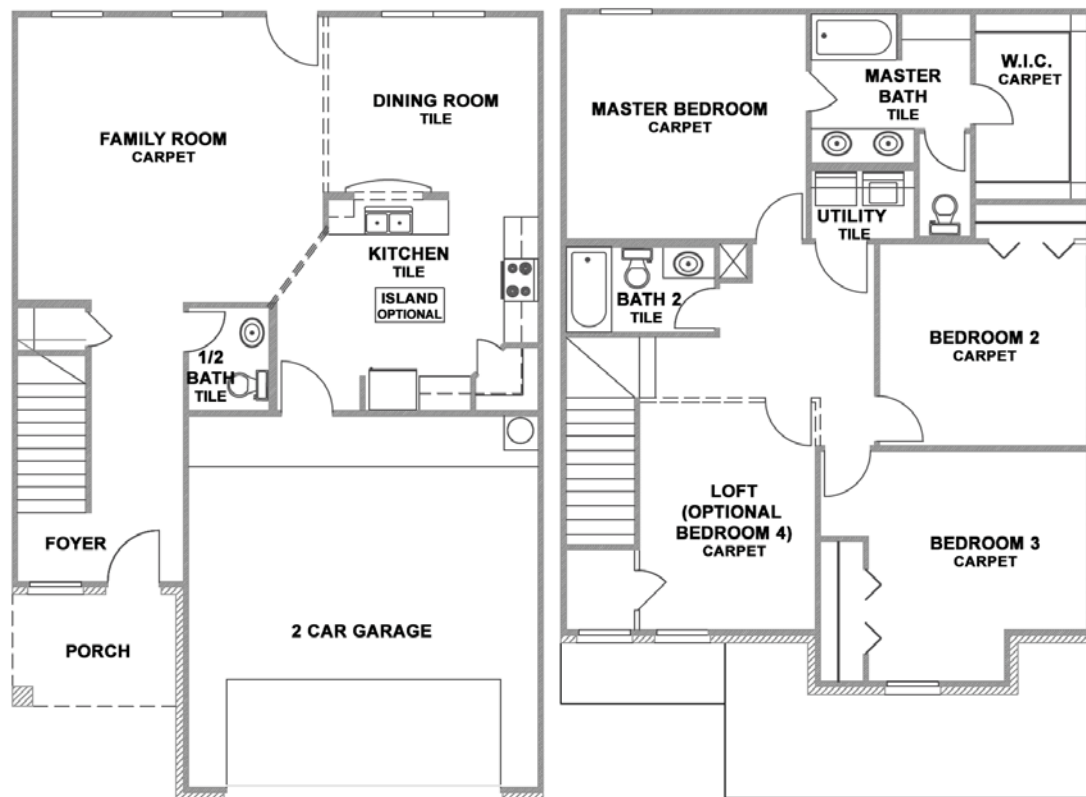
2 car garage

Approx. 1945 sq. ft.



This plan is copyrighted by WestWind Homes and may not be reproduced, modified or reused without the express written consent of WestWind Homes. For Information call: (956)723-8750.

Working drawings shall not scaled; details and drawings are builder type. WestWind Homes reserves the right to change floorplans specifications, prices, financing terms and availability without prior notice and may vary by neighborhood lot locations and home series.



FIRST FLOOR

SECOND FLOOR

**BUILT BY**



Built for your life.

This price of \$ \_\_\_\_\_ is valid for 30 days.

\_\_\_\_\_ (signed by WestWind Sales Representative)

\_\_\_\_\_ (Date)

www.westwindhomes.com Woodridge Phone# \_\_\_\_\_  
Office Hours: Monday - Friday 10am - 7pm Saturday 12noon - 6 pm Closed Sundays