

ELEVATIONS

SAN FELIPE 2042



STUCCO

BRICK



SHILOH CROSSING

FLOOR PLANS

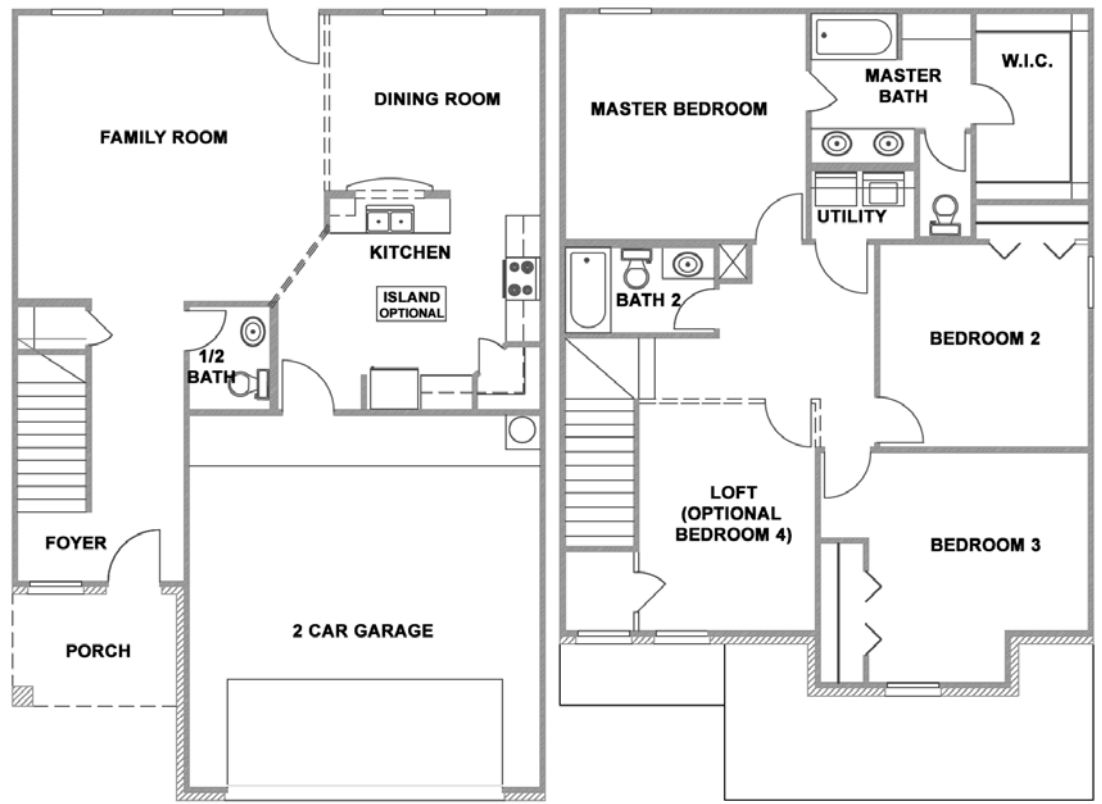
SAN FELIPE

3 bedrooms (4th optional)
 2 1/2 baths
 2 car garage
 Approx. 2042 sq. ft.



This plan is copyrighted by WestWind Homes and may not be reproduced, modified or reused without the express written consent of WestWind Homes. For Information call: (956)723-8750.

Working drawings shall not scaled; details and drawings are builder type. WestWind Homes reserves the right to change floorplans specifications, prices, financing terms and availability without prior notice and may vary by neighborhood lot locations and home series.



FIRST FLOOR

SECOND FLOOR

BUILT BY



Built for your life.

This price of \$ _____ is valid for 30 days. _____ (signed by WestWind Sales Representative) _____ (Date)

www.westwindhomes.com Shiloh Crossing Phone# _____
 Office Hours: Monday - Friday 10am - 7pm Saturday 12noon - 6 pm Closed Sundays