

SHILOH CROSSING

# ELEVATIONS

**CALVIN 1750**



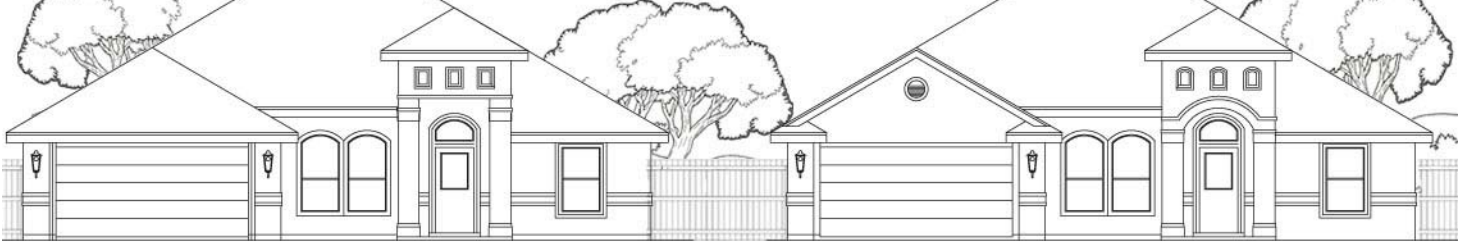
A - BRICK

B - BRICK



A - STUCCO

B - STUCCO

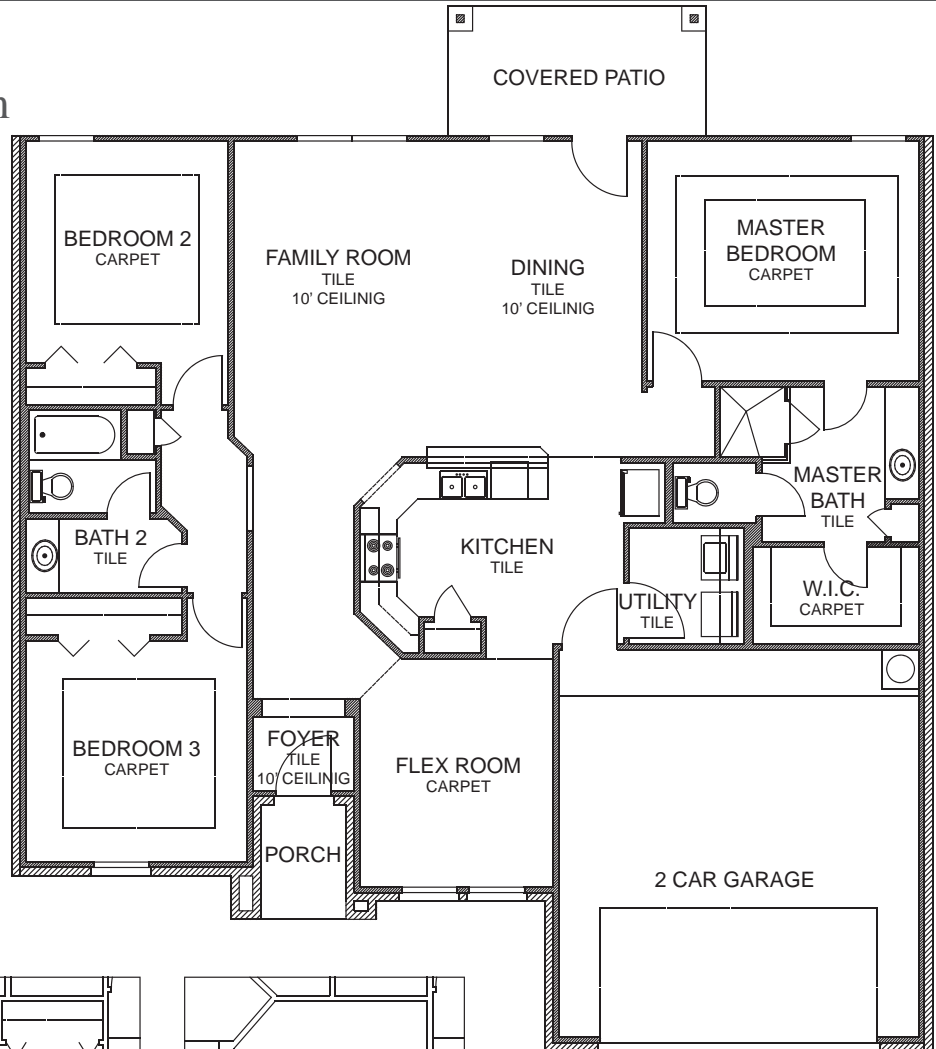


# FLOOR PLANS

## CALVIN

1750

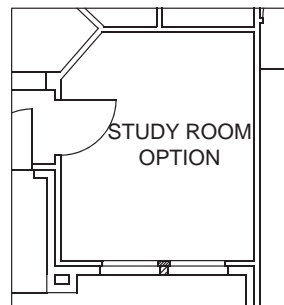
3 bedrooms & flex room  
 2 baths  
 2 car garage



This plan is copyrighted by WestWind Homes and may not be reproduced, modified or reused without the express written consent of WestWind Homes. For Information call: (956)723-8750.

Working drawings shall not scaled; details and drawings are builder type. WestWind Homes reserves the right to change floorplans specifications, prices, financing terms and availability without prior notice and may vary by neighborhood lot locations and home series.

**BUILT BY**



This price of \$ \_\_\_\_\_ is valid for 30 days. \_\_\_\_\_ (signed by WestWind Sales Representative) \_\_\_\_\_ (Date)

www.westwindhomes.com Shiloh Crossing Phone# \_\_\_\_\_  
 Office Hours: Monday - Friday 10am - 7pm Saturday 12noon - 6 pm Closed Sundays