

LA PRIMAVERA ELEVATIONS

GUADALUPE 2436


WestWind Homes.com
Built for your life.



Brick A



Stucco A



Brick B



Stucco B

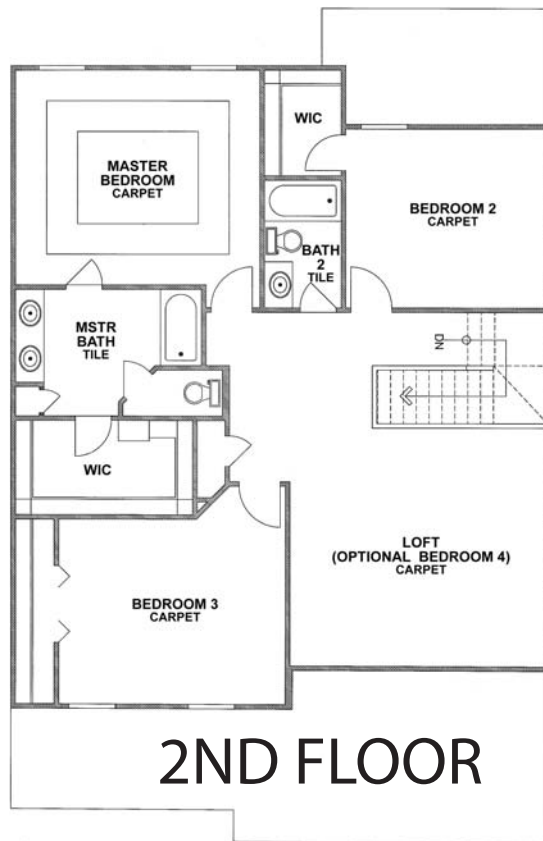
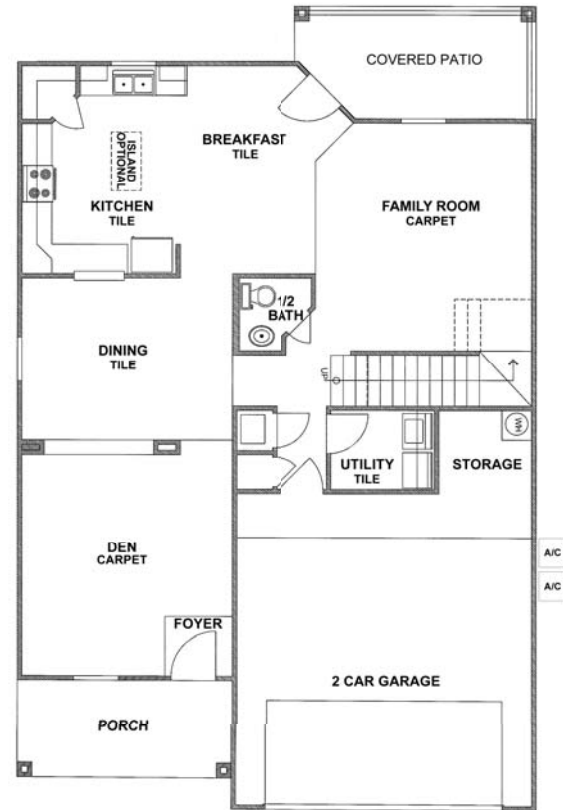


LA PRIMAVERA FLOOR PLANS

GUADALUPE

3 bedrooms (4th bed option)
2 1/2 baths (3rd bath option)
2 car garage
Approx. 2436 sq. ft.

1ST FLOOR



2ND FLOOR



OPTIONAL

This plan is copyrighted by WestWind Homes and may not be reproduced, modified or reused without the express written consent of WestWind Homes. For Information call: (956)723-8750.

Working drawings shall not scaled; details and drawings are builder type. WestWind Homes reserves the right to change floorplans specifications, prices, financing terms and availability without prior notice and may vary by neighborhood lot locations and home series.

BUILT BY



This price of \$ _____ is valid for 30 days.

(signed by WestWind Sales Representative)

(Date)

www.westwindhomes.com Primavera Phone# _____
Office Hours: Monday - Friday 10am - 7pm Saturday 12noon - 6 pm Closed Sundays