

# ELEVATIONS

*Paseo*  
EN ESCONDIDO

**SANTA MONICA 1450**

 **WestWind Homes.com**  
Built for your life.



- STONE/SIDING



- STONE

# FLOOR PLANS

*Paseo*  
EN ESCONDIDO

## SANTA MONICA

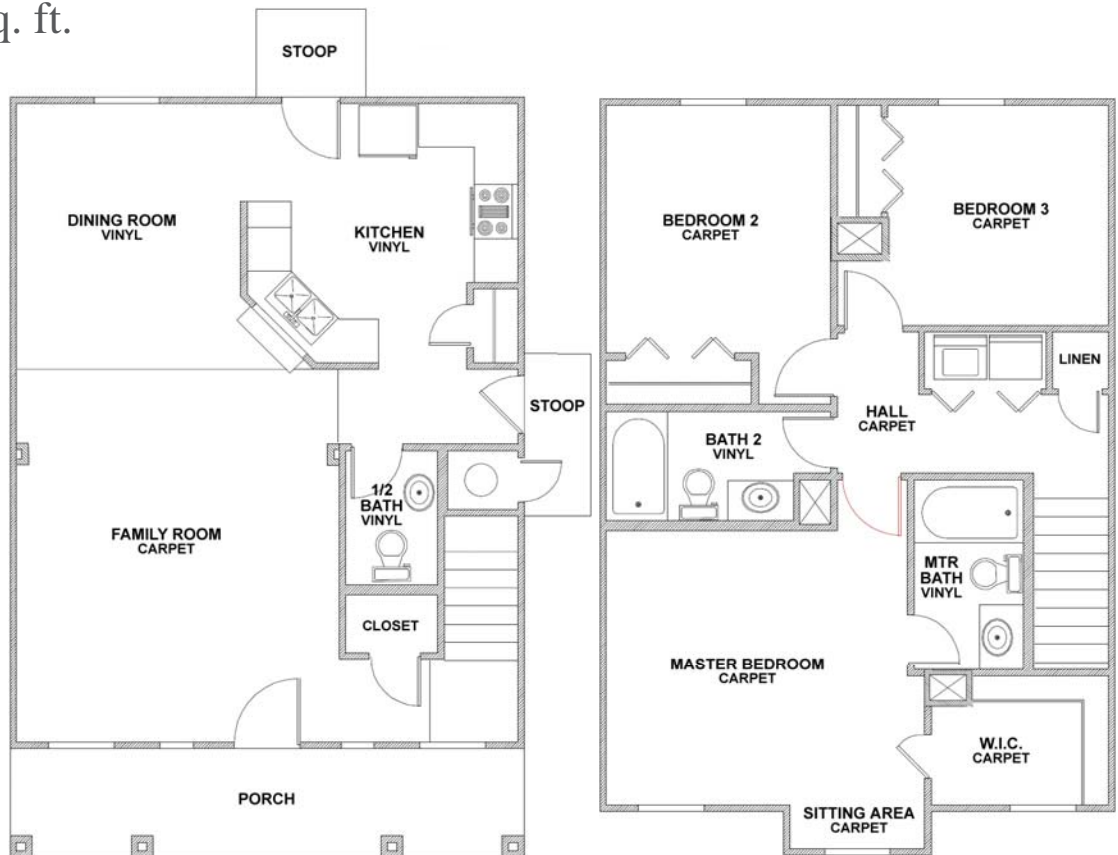
3 bedrooms  
Family room  
2 1/2 baths  
Approx. 1450 sq. ft.

This plan is copyrighted by WestWind Homes and may not be reproduced, modified or reused without the express written consent of WestWind Homes. For Information call: (956)723-8750.

Working drawings shall not scaled; details and drawings are builder type. WestWind Homes reserves the right to change floorplans specifications, prices, financing terms and availability without prior notice and may vary by neighborhood lot locations and home series.

**BUILT BY**

  
**WestWind  
Homes.com**  
Built for your life.



**FIRST FLOOR**

**SECOND FLOOR**

This price of \$ \_\_\_\_\_ is valid for 30 days.

(signed by WestWind Sales Representative)

(Date)

[www.westwindhomes.com](http://www.westwindhomes.com) Paseo Escondido Phone# \_\_\_\_\_  
Office Hours: Monday - Friday 10am - 7pm Saturday 12noon - 6 pm Closed Sundays